

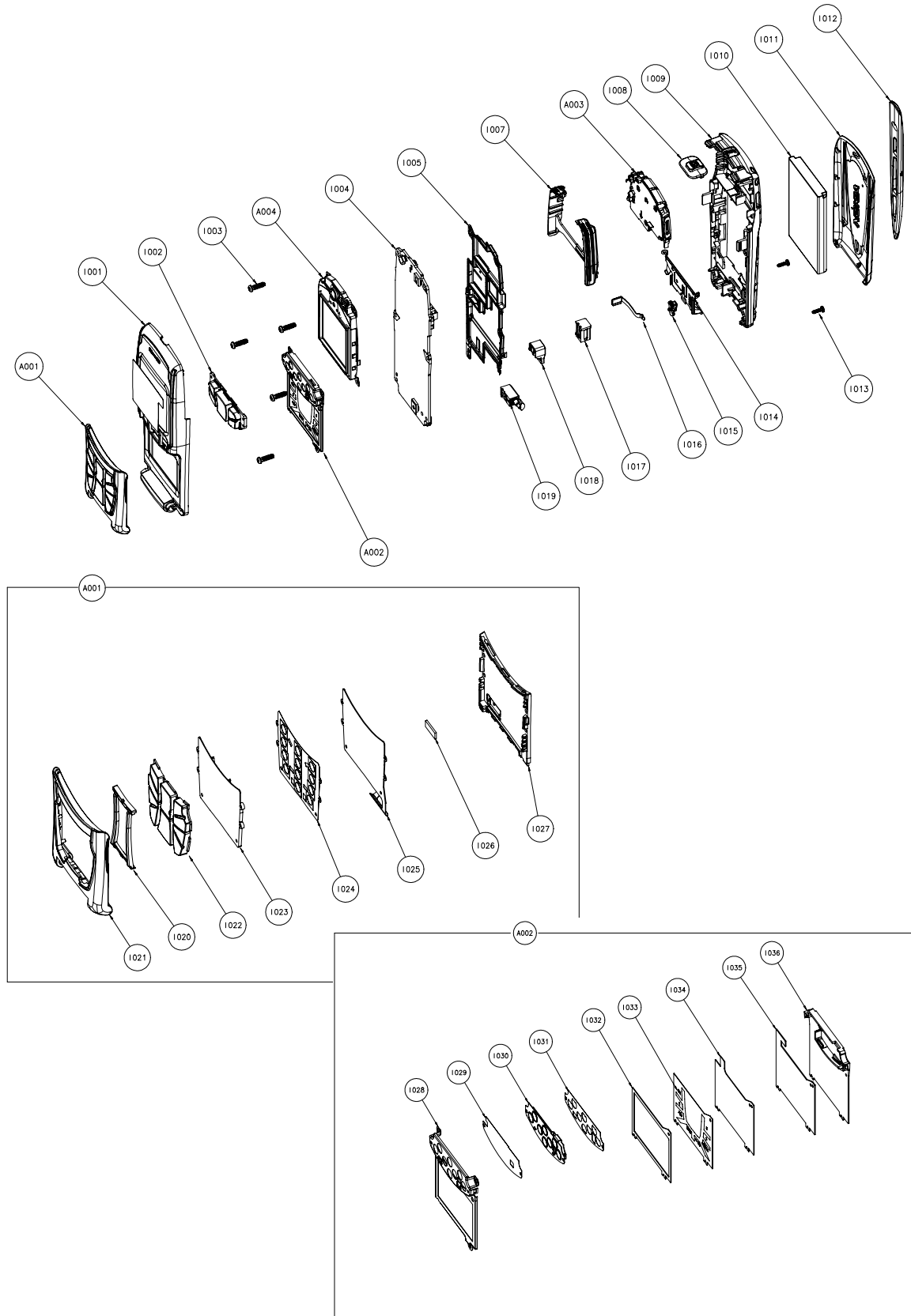
# Customer Care Solutions RH-6 Series Cellular Phones

## 2 – Parts Lists & Layouts

**Table of Contents**

	<b>Page No</b>
Exploded View of 'A', 'B', and Flip Cover Assemblies and Touch Pad Module .....	3
Exploded View of Antenna Assembly and UI module.....	6
Assembly parts list for antenna assembly and UI module .....	6
Parts list module ----- for RH-6 .....	8
Component layout diagram - Top .....	24
Component layout diagram - Bottom .....	25

Exploded View of 'A', 'B', and Flip Cover Assemblies and Touch Pad Module



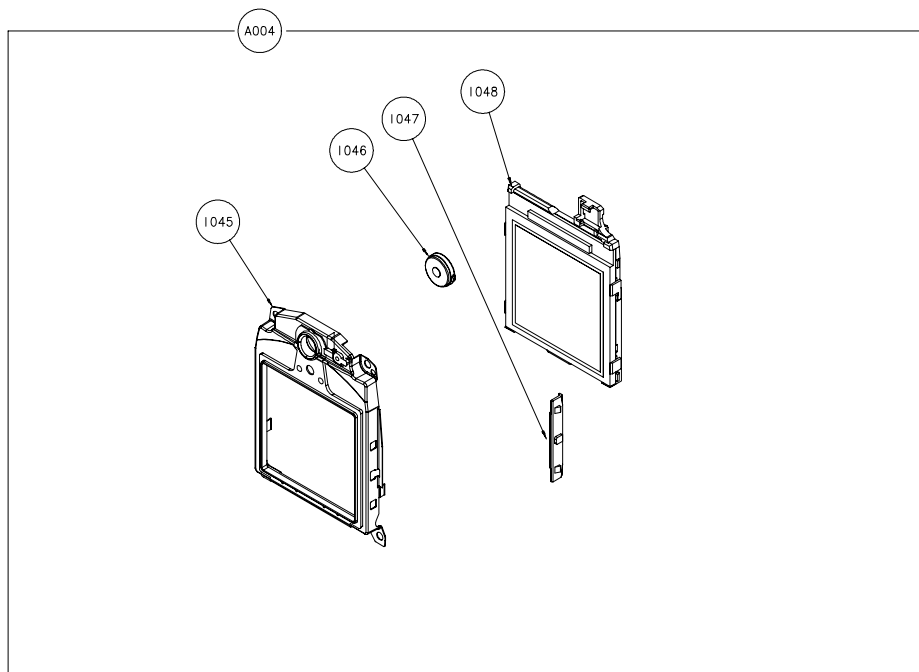
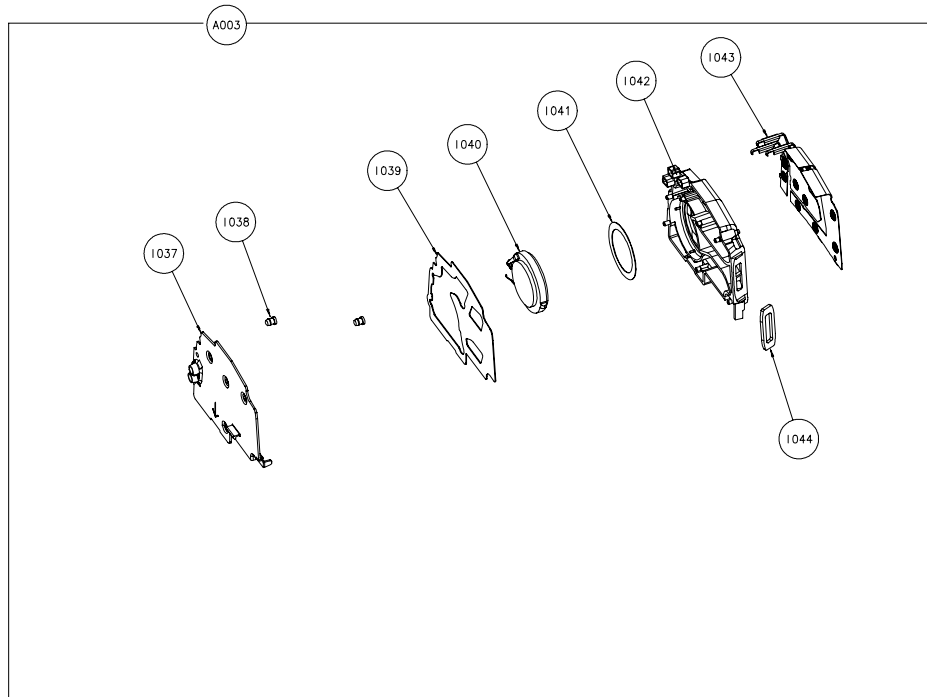
## Assembly Parts List for 'A' Cover, 'B' Cover, Flip assy and Touch pad module

Item	Description	Available as a spare part
I001	A-cover assembly	Yes
I002	Keymat function	Yes
I003	Screw 1.8X6.0 T6	Yes
I004	PWB	No
I005	Shielding assembly	Yes
I006	Wrap right	Yes
I007	Wrap left	Yes
I008	Power key	Yes
I009	B-cover assembly	Yes
I010	Battery BL-4C	No
I011	C-cover assembly	Yes
I012	Stylus	Yes
I013	Screw M1.6X5.3	Yes
I014	SIM Flap	Yes
I015	Release button	Yes
I016	Release spring	Yes
I017	Connector DC-Jack 3.5mm	Yes
I018	Mic. + Boot assembly	Yes
I019	Vibra motor assembly	Yes
<b>A001</b>	<b>Flip assembly</b>	<b>Yes</b>
I020	Light rail	No
I021	Flip cover assembly	No
I022	Numerical keys	No
I023	Keymat	No
I024	Domesheet	No
I025	Flip flex	No
I026	Magnet	No
I027	Flip back cover	No
<b>A002</b>	<b>Touch pad module</b>	<b>Yes</b>
I028	Touch pad shield	No
I029	Touch pad panel	No

Item	Description	Available as a spare part
I030	Touch pad flex	No
I031	Domesheet	No
I032	Touch pad foam	No
I033	Touch pad graphic sheet	No
I034	Touch pad EL sheet	No
I035	Touch pad carbon	No
I036	Touch pad base	No

*For NMP codes, please refer to the Bill Of Repair (BOR) spare parts list.*

## Exploded View of Antenna Assembly and UI module



### Assembly parts list for antenna assembly and UI module

Item	Description	Available as a spare part
A003	Antenna assembly	Yes
1037	IHF Lid	No
1038	IHF Pin	No

Item	Description	Available as a spare part
I039	Enclosure adhesive	No
I040	Speaker	No
I041	Speaker adhesive	No
I042	IHF enclosure	No
I043	Antenna radiator	No
I044	B-cover gasket	No
A004	UI module	Yes
I045	UI shield assembly	No
I046	Speaker	Yes
I047	Locking clips	No
I048	LCD module	No

*For NMP codes, please refer to the Bill Of Repair (BOR) spare parts list.*

## Parts list module ----- for RH-6

## PWB components

Item	Product code	Location			Description and Value			Type
		Side	Grid	Ref				
B200	4510219	Bottom	M	5	CRYSTAL 32.768KHZ+-30PPM 9PF	32.768kHz	~	CRYSTAL_CX_4V
B601	4510337	Bottom	H	2	CRYSTAL 26.0MHZ+-8PPM CL=15.5	26MHz	~	CRYSTAL_TSX_8A
C100	2320546	Bottom	F	7	Chipcap 5% NPO	27p	50V	0402C
C101	2320139	Top	S	4	CHIPCAP X5R 1U0 K 10V 0603	1u0	10V	0603C_H0.95
C102	2320481	Top	S	4	CHIPCAP X5R 1U K 6V3 0603	1u0	6.3V	0603C
C103	2321013	Bottom	R	7	CHIPCAP NPO 270P J 25V 0402	270p	25V	0402C
C104	2320544	Bottom	R	7	Chipcap 5% NPO	22p	50V	0402C
C105	2320544	Bottom	R	6	Chipcap 5% NPO	22p	50V	0402C
C106	2320744	Bottom	S	3	Chipcap X7R 10% 50V 0402	1n0	50V	0402C
C107	2320778	Bottom	T	7	Chipcap X7R 10% 16V 0402	10n	16V	0402C
C108	2320778	Bottom	T	6	Chipcap X7R 10% 16V 0402	10n	16V	0402C
C109	2320778	Bottom	T	7	Chipcap X7R 10% 16V 0402	10n	16V	0402C
C110	2320544	Bottom	R	3	Chipcap 5% NPO	22p	50V	0402C
C111	2320778	Bottom	T	7	Chipcap X7R 10% 16V 0402	10n	16V	0402C
C113	2320778	Top	T	3	Chipcap X7R 10% 16V 0402	10n	16V	0402C
C150	2312243	Bottom	O	7	CHIPCAP X5R 4U7 K 6V3 0805	4u7	6V3	0805C
C152	2312243	Bottom	O	6	CHIPCAP X5R 4U7 K 6V3 0805	4u7	6V3	0805C
C153	2320783	Bottom	N	6	CHIPCAP X7R 33N K 10V 0402	33n	10V	0402C
C155	2320805	Bottom	N	5	CHIPCAP X5R 100N K 10V 0402	100n	10V	0402C
C156	2320544	Bottom	T	7	Chipcap 5% NPO	22p	50V	0402C



Item	Product code	Location			Description and Value			Type
		Side	Grid	Ref				
C157	2320544	Bottom	T	7	Chipcap 5% NP0	22p	50V	0402C
C158	2320805	Bottom	N	6	CHIPCAP X5R 100N K 10V 0402	100n	10V	0402C
C159	2320783	Bottom	N	6	CHIPCAP X7R 33N K 10V 0402	33n	10V	0402C
C160	2320544	Bottom	N	6	Chipcap 5% NP0	22p	50V	0402C
C161	2320744	Bottom	N	6	Chipcap X7R 10% 50V 0402	1n0	50V	0402C
C162	2320805	Bottom	N	6	CHIPCAP X5R 100N K 10V 0402	100n	10V	0402C
C163	2320481	Bottom	O	6	CHIPCAP X5R 1U K 6V3 0603	1u0	6.3V	0603C
C164	2320544	Bottom	N	5	Chipcap 5% NP0	22p	50V	0402C
C165	2320544	Bottom	N	5	Chipcap 5% NP0	22p	50V	0402C
C166	2320783	Bottom	N	7	CHIPCAP X7R 33N K 10V 0402	33n	10V	0402C
C167	2320139	Bottom	N	5	CHIPCAP X5R 1U0 K 10V 0603	1u0	10V	0603C_H0.95
C168	2320805	Bottom	O	6	CHIPCAP X5R 100N K 10V 0402	100n	10V	0402C
C169	2320544	Bottom	N	6	Chipcap 5% NP0	22p	50V	0402C
C170	2320783	Bottom	N	7	CHIPCAP X7R 33N K 10V 0402	33n	10V	0402C
C171	2320548	Bottom	N	6	Chipcap 5% NP0	33p	50V	0402C
C172	2320548	Bottom	N	7	Chipcap 5% NP0	33p	50V	0402C
C173	2320744	Bottom	N	7	Chipcap X7R 10% 50V 0402	1n0	50V	0402C
C174	2320744	Bottom	N	7	Chipcap X7R 10% 50V 0402	1n0	50V	0402C
C175	2316001	Bottom	O	7	CHIPCAP X5R 2U2 K 6V3 0603	2u2	6V3	0603C
C176	2316001	Bottom	O	7	CHIPCAP X5R 2U2 K 6V3 0603	2u2	6V3	0603C
C177	2320552	Bottom	E	2	Chipcap 5% NP0	47p	50V	0402C
C178	2320552	Bottom	E	2	Chipcap 5% NP0	47p	50V	0402C
C179	2320544	Bottom	M	5	Chipcap 5% NP0	22p	50V	0402C
C180	2320544	Bottom	M	5	Chipcap 5% NP0	22p	50V	0402C

Item	Product code	Location			Description and Value			Type
		Side	Grid	Ref				
C181	2320544	Bottom	O	7	Chipcap 5% NP0	22p	50V	0402C
C182	2320544	Bottom	O	7	Chipcap 5% NP0	22p	50V	0402C
C183	2316001	Bottom	O	7	CHIPCAP X5R 2U2 K 6V3 0603	2u2	6V3	0603C
C184	2316001	Bottom	O	7	CHIPCAP X5R 2U2 K 6V3 0603	2u2	6V3	0603C
C185	2320744	Bottom	N	6	Chipcap X7R 10% 50V 0402	1n0	50V	0402C
C200	2320805	Bottom	L	6	CHIPCAP X5R 100N K 10V 0402	100n	10V	0402C
C201	2320481	Bottom	K	5	CHIPCAP X5R 1U K 6V3 0603	1u0	6.3V	0603C
C202	2320778	Bottom	K	5	Chipcap X7R 10% 16V 0402	10n	16V	0402C
C203	2320481	Bottom	N	8	CHIPCAP X5R 1U K 6V3 0603	1u0	6.3V	0603C
C204	2320481	Bottom	K	5	CHIPCAP X5R 1U K 6V3 0603	1u0	6.3V	0603C
C205	2320481	Bottom	L	5	CHIPCAP X5R 1U K 6V3 0603	1u0	6.3V	0603C
C206	2320481	Bottom	L	5	CHIPCAP X5R 1U K 6V3 0603	1u0	6.3V	0603C
C207	2320481	Bottom	M	8	CHIPCAP X5R 1U K 6V3 0603	1u0	6.3V	0603C
C208	2320481	Bottom	K	5	CHIPCAP X5R 1U K 6V3 0603	1u0	6.3V	0603C
C209	2320536	Bottom	M	5	Chipcap 5% NP0	10p	50V	0402C
C210	2320536	Bottom	N	5	Chipcap 5% NP0	10p	50V	0402C
C211	2320481	Bottom	M	5	CHIPCAP X5R 1U K 6V3 0603	1u0	6.3V	0603C
C212	2320481	Bottom	P	5	CHIPCAP X5R 1U K 6V3 0603	1u0	6.3V	0603C
C213	2320481	Bottom	L	5	CHIPCAP X5R 1U K 6V3 0603	1u0	6.3V	0603C
C214	2320481	Bottom	L	5	CHIPCAP X5R 1U K 6V3 0603	1u0	6.3V	0603C
C215	2320481	Bottom	N	8	CHIPCAP X5R 1U K 6V3 0603	1u0	6.3V	0603C

Item	Product code	Location			Description and Value			Type
		Side	Grid	Ref				
C218	2320805	Bottom	K	8	CHIPCAP X5R 100N K 10V 0402	100n	10V	0402C
C219	2320481	Bottom	K	5	CHIPCAP X5R 1U K 6V3 0603	1u0	6.3V	0603C
C220	2320778	Bottom	N	5	Chipcap X7R 10% 16V 0402	10n	16V	0402C
C221	2320481	Bottom	K	6	CHIPCAP X5R 1U K 6V3 0603	1u0	6.3V	0603C
C222	2320481	Bottom	J	6	CHIPCAP X5R 1U K 6V3 0603	1u0	6.3V	0603C
C223	2320481	Bottom	K	6	CHIPCAP X5R 1U K 6V3 0603	1u0	6.3V	0603C
C224	2320481	Bottom	K	7	CHIPCAP X5R 1U K 6V3 0603	1u0	6.3V	0603C
C225	2320481	Bottom	K	7	CHIPCAP X5R 1U K 6V3 0603	1u0	6.3V	0603C
C226	2320481	Bottom	J	7	CHIPCAP X5R 1U K 6V3 0603	1u0	6.3V	0603C
C227	2320481	Bottom	J	7	CHIPCAP X5R 1U K 6V3 0603	1u0	6.3V	0603C
C228	2320481	Bottom	J	8	CHIPCAP X5R 1U K 6V3 0603	1u0	6.3V	0603C
C229	2320481	Bottom	J	7	CHIPCAP X5R 1U K 6V3 0603	1u0	6.3V	0603C
C230	2320481	Bottom	K	7	CHIPCAP X5R 1U K 6V3 0603	1u0	6.3V	0603C
C231	2320481	Bottom	K	8	CHIPCAP X5R 1U K 6V3 0603	1u0	6.3V	0603C
C232	2320481	Bottom	K	7	CHIPCAP X5R 1U K 6V3 0603	1u0	6.3V	0603C
C234	2320481	Bottom	J	7	CHIPCAP X5R 1U K 6V3 0603	1u0	6.3V	0603C
C235	2320481	Bottom	L	5	CHIPCAP X5R 1U K 6V3 0603	1u0	6.3V	0603C
C236	2320805	Bottom	K	8	CHIPCAP X5R 100N K 10V 0402	100n	10V	0402C
C237	2320805	Bottom	K	8	CHIPCAP X5R 100N K 10V 0402	100n	10V	0402C
C238	2320805	Bottom	L	5	CHIPCAP X5R 100N K 10V 0402	100n	10V	0402C

Item	Product code	Location			Description and Value			Type
		Side	Grid	Ref				
C239	2320805	Bottom	L	8	CHIPCAP X5R 100N K 10V 0402	100n	10V	0402C
C240	2320778	Bottom	L	9	Chipcap X7R 10% 16V 0402	10n	16V	0402C
C241	2320744	Bottom	M	5	Chipcap X7R 10% 50V 0402	1n0	50V	0402C
C242	2320744	Bottom	L	8	Chipcap X7R 10% 50V 0402	1n0	50V	0402C
C243	2320481	Bottom	L	5	CHIPCAP X5R 1U K 6V3 0603	1u0	6.3V	0603C
C260	2320481	Bottom	J	7	CHIPCAP X5R 1U K 6V3 0603	1u0	6.3V	0603C
C261	2320481	Bottom	K	5	CHIPCAP X5R 1U K 6V3 0603	1u0	6.3V	0603C
C262	2320481	Bottom	J	6	CHIPCAP X5R 1U K 6V3 0603	1u0	6.3V	0603C
C263	2320481	Bottom	J	7	CHIPCAP X5R 1U K 6V3 0603	1u0	6.3V	0603C
C264	2320481	Bottom	J	7	CHIPCAP X5R 1U K 6V3 0603	1u0	6.3V	0603C
C265	2320481	Bottom	J	7	CHIPCAP X5R 1U K 6V3 0603	1u0	6.3V	0603C
C300	2320805	Top	B	6	CHIPCAP X5R 100N K 10V 0402	100n	10V	0402C
C301	2320805	Top	C	6	CHIPCAP X5R 100N K 10V 0402	100n	10V	0402C
C302	2320556	Bottom	O	8	Chipcap 5% NPO	68p	50V	0402C
C303	2320481	Bottom	O	8	CHIPCAP X5R 1U K 6V3 0603	1u0	6.3V	0603C
C304	2320125	Bottom	M	8	CHIPCAP X5R 1U K 16V 0603	1u0	16V	0603C
C305	2320125	Bottom	M	8	CHIPCAP X5R 1U K 16V 0603	1u0	16V	0603C
C306	2320778	Bottom	Q	5	Chipcap X7R 10% 16V 0402	10n	16V	0402C
C309	2320481	Top	S	3	CHIPCAP X5R 1U K 6V3 0603	1u0	6.3V	0603C
C310	2320544	Bottom	B	5	Chipcap 5% NPO	22p	50V	0402C
C312	2320544	Bottom	F	2	Chipcap 5% NPO	22p	50V	0402C

Item	Product code	Location			Description and Value			Type
		Side	Grid	Ref				
C313	2320544	Top	B	4	Chipcap 5% NPO	22p	50V	0402C
C320	2320544	Top	S	5	Chipcap 5% NPO	22p	50V	0402C
C321	2320544	Top	T	5	Chipcap 5% NPO	22p	50V	0402C
C322	2320544	Top	S	5	Chipcap 5% NPO	22p	50V	0402C
C323	2320544	Top	U	5	Chipcap 5% NPO	22p	50V	0402C
C324	2320544	Top	U	5	Chipcap 5% NPO	22p	50V	0402C
C330	2320584	Top	L	6	Chipcap 5% X7R	1n0	50V	0402C
C331	2320584	Top	L	6	Chipcap 5% X7R	1n0	50V	0402C
C332	2320584	Top	L	6	Chipcap 5% X7R	1n0	50V	0402C
C333	2320584	Top	L	6	Chipcap 5% X7R	1n0	50V	0402C
C343	2320805	Bottom	P	5	CHIPCAP X5R 100N K 10V 0402	100n	10V	0402C
C344	2320805	Bottom	N	5	CHIPCAP X5R 100N K 10V 0402	100n	10V	0402C
C390	2320805	Bottom	R	8	CHIPCAP X5R 100N K 10V 0402	100n	10V	0402C
C400	2320778	Bottom	M	5	Chipcap X7R 10% 16V 0402	10n	16V	0402C
C401	2320805	Bottom	M	5	CHIPCAP X5R 100N K 10V 0402	100n	10V	0402C
C402	2320778	Bottom	L	5	Chipcap X7R 10% 16V 0402	10n	16V	0402C
C403	2320778	Bottom	N	5	Chipcap X7R 10% 16V 0402	10n	16V	0402C
C404	2320778	Bottom	N	5	Chipcap X7R 10% 16V 0402	10n	16V	0402C
C405	2320778	Bottom	M	5	Chipcap X7R 10% 16V 0402	10n	16V	0402C
C420	2320552	Bottom	L	5	Chipcap 5% NPO	47p	50V	0402C
C426	2320744	Bottom	K	5	Chipcap X7R 10% 50V 0402	1n0	50V	0402C
C450	2320778	Bottom	Q	5	Chipcap X7R 10% 16V 0402	10n	16V	0402C
C451	2320805	Bottom	Q	5	CHIPCAP X5R 100N K 10V 0402	100n	10V	0402C
C454	2320779	Bottom	Q	5	CHIPCAP X7R 100N K 16V 0603	100n	16V	0603_BLM

Item	Product code	Location			Description and Value			Type
		Side	Grid	Ref				
C601	2320629	Bottom	C	4	CHIPCAP NP0 1P0 B 50V 0402	1p0	50V	0402C
C602	2320629	Bottom	C	3	CHIPCAP NP0 1P0 B 50V 0402	1p0	50V	0402C
C603	2320744	Bottom	H	3	Chipcap X7R 10% 50V 0402	1n0	50V	0402C
C605	2320805	Bottom	I	3	CHIPCAP X5R 100N K 10V 0402	100n	10V	0402C
C606	2320546	Bottom	H	3	Chipcap 5% NP0	27p	50V	0402C
C607	2312211	Bottom	G	2	CHIPCAP X5R 3U3 K 6V3 0805	3u3	6V3	0805C_H1.35
C610	2320805	Bottom	L	4	CHIPCAP X5R 100N K 10V 0402	100n	10V	0402C
C615	2320778	Bottom	G	3	Chipcap X7R 10% 16V 0402	10n	16V	0402C
C620	2320546	Bottom	G	3	Chipcap 5% NP0	27p	50V	0402C
C621	2320552	Bottom	I	2	Chipcap 5% NP0	47p	50V	0402C
C622	2320805	Bottom	I	3	CHIPCAP X5R 100N K 10V 0402	100n	10V	0402C
C623	2320805	Bottom	I	4	CHIPCAP X5R 100N K 10V 0402	100n	10V	0402C
C624	2320546	Bottom	H	5	Chipcap 5% NP0	27p	50V	0402C
C625	2320481	Bottom	J	4	CHIPCAP X5R 1U K 6V3 0603	1u0	6.3V	0603C
C626	2320522	Bottom	G	5	Chipcap +-0.25pF NP0	2p7	50V	0402C
C627	2313213	Bottom	J	2	CHIPCAP X5R 10U K 6V3 1206	10u	6.3V	1206C_H1.8
C628	2320778	Bottom	I	3	Chipcap X7R 10% 16V 0402	10n	16V	0402C
C629	2320546	Bottom	I	4	Chipcap 5% NP0	27p	50V	0402C
C630	2320629	Bottom	G	4	CHIPCAP NP0 1P0 B 50V 0402	1p0	50V	0402C
C631	2320629	Bottom	G	5	CHIPCAP NP0 1P0 B 50V 0402	1p0	50V	0402C
C632	2320805	Bottom	H	3	CHIPCAP X5R 100N K 10V 0402	100n	10V	0402C
C633	2320546	Bottom	I	4	Chipcap 5% NP0	27p	50V	0402C
C634	2320522	Bottom	G	3	Chipcap +-0.25pF NP0	2p7	50V	0402C

Item	Product code	Location			Description and Value			Type
		Side	Grid	Ref				
C635	2320546	Bottom	I	4	Chipcap 5% NPO	27p	50V	0402C
C636	2320778	Bottom	I	3	Chipcap X7R 10% 16V 0402	10n	16V	0402C
C637	2320778	Bottom	I	4	Chipcap X7R 10% 16V 0402	10n	16V	0402C
C701	2320532	Bottom	D	3	Chipcap +-0.25pF NPO	6p8	50V	0402C
C702	2320532	Bottom	E	4	Chipcap +-0.25pF NPO	6p8	50V	0402C
C703	2320546	Bottom	D	4	Chipcap 5% NPO	27p	50V	0402C
C705	2322023	Bottom	I	5	CHIPCAP NPO 2N2 J 16V 0603	2n2	16V	0603C
C706	2320556	Bottom	I	5	Chipcap 5% NPO	68p	50V	0402C
C709	2320631	Bottom	I	5	CHIPCAP NPO 180P J 25V 0402	180p	25V	0402C
C710	2320631	Bottom	I	4	CHIPCAP NPO 180P J 25V 0402	180p	25V	0402C
C711	2310055	Bottom	J	5	CHIPCAP NPO 3N9 J 25V 0805	3n9	25V	0805C_AVX
C712	2320631	Bottom	K	2	CHIPCAP NPO 180P J 25V 0402	180p	25V	0402C
C715	2320556	Bottom	I	4	Chipcap 5% NPO	68p	50V	0402C
C716	2320556	Bottom	I	3	Chipcap 5% NPO	68p	50V	0402C
C717	2320546	Bottom	J	5	Chipcap 5% NPO	27p	50V	0402C
C718	2320744	Bottom	I	5	Chipcap X7R 10% 50V 0402	1n0	50V	0402C
C721	2320744	Bottom	G	5	Chipcap X7R 10% 50V 0402	1n0	50V	0402C
C722	2320540	Bottom	F	5	Chipcap 5% NPO	15p	50V	0402C
C723	2320540	Bottom	F	5	Chipcap 5% NPO	15p	50V	0402C
C731	2320550	Bottom	G	5	Chipcap 5% NPO	39p	50V	0402C
C740	2312211	Bottom	K	4	CHIPCAP X5R 3U3 K 6V3 0805	3u3	6V3	0805C_H1.35
C741	2320635	Bottom	K	2	CHIPCAP NPO 0P5 C 50V 0402	0p5	50V	0402C
C801	2320602	Bottom	E	5	Chipcap +-0.25pF NPO	4p7	50V	0402C
C802	2320546	Bottom	D	5	Chipcap 5% NPO	27p	50V	0402C
C803	2320546	Bottom	C	4	Chipcap 5% NPO	27p	50V	0402C

Item	Product code	Location			Description and Value			Type
		Side	Grid Ref					
C804	2320546	Bottom	C	4	Chipcap 5% NPO	27p	50V	0402C
C805	2320546	Bottom	C	4	Chipcap 5% NPO	27p	50V	0402C
C807	2320520	Bottom	C	5	Chipcap +-0.25pF NPO	2p2	50V	0402C
C811	2320744	Bottom	C	5	Chipcap X7R 10% 50V 0402	1n0	50V	0402C
C812	2310793	Bottom	I	8	CHIPCAP X5R 2U2 K 10V 0805	2u2	10V	0805C
C813	2320524	Bottom	D	5	Chipcap +-0.25pF NPO	3p3	50V	0402C
C814	2320548	Bottom	C	5	Chipcap 5% NPO	33p	50V	0402C
C815	2611753	Bottom	I	7	CHIPTCAP 33U M 16V 6.0X3.2X1.5	33u_16V	16V	TANT_TPSW2
C816	2320604	Bottom	I	8	Chipcap 5% NPO	18p	50V	0402C
C817	2320602	Bottom	I	8	Chipcap +-0.25pF NPO	4p7	50V	0402C
C818	2320546	Bottom	D	8	Chipcap 5% NPO	27p	50V	0402C
C819	2611753	Bottom	B	7	CHIPTCAP 33U M 16V 6.0X3.2X1.5	33u_16V	16V	TANT_TPSW2
C820	2320546	Bottom	D	8	Chipcap 5% NPO	27p	50V	0402C
C821	2320518	Bottom	D	8	Chipcap +-0.25pF NPO	1p8	50V	0402C
C822	2320546	Bottom	D	8	Chipcap 5% NPO	27p	50V	0402C
C824	2320526	Bottom	E	8	Chipcap +-0.25pF NPO	3p9	50V	0402C
C825	2320805	Bottom	E	5	CHIPCAP X5R 100N K 10V 0402	100n	10V	0402C
C826	2320805	Bottom	C	5	CHIPCAP X5R 100N K 10V 0402	100n	10V	0402C
C835	2320514	Bottom	F	8	Chipcap +-0.25pF NPO	1p2	50V	0402C
C836	2320524	Bottom	F	7	Chipcap +-0.25pF NPO	3p3	50V	0402C
C837	2320552	Bottom	F	7	Chipcap 5% NPO	47p	50V	0402C
C872	2320805	Bottom	H	2	CHIPCAP X5R 100N K 10V 0402	100n	10V	0402C
D200	4370959	Bottom	L	7	UEMK_EDGE WDENA TO25 TFBGA168	~	~	uBGA168
D400	4375019	Bottom	N	3	UPP8M V3.5 F751542I UBGA144 C035	~	~	uBGA144_CC
D450	4341531	Bottom	P	3	COMBO 64M NOR + 4M SRAM TBGA48	64M/4M	~	TBGA48



Item	Product code	Location			Description and Value			Type
		Side	Grid	Ref				
F100	5119019	Bottom	S	3	SM FUSE F 1.5A 32V 0603	1.5A	~	0603_FUSE
G701	4350315	Bottom	K	3	VCO 3420-3980MHZ 2.7V 19MA	3420- 3980MHz	~	VCO_FDK_IT_H1. 7
L100	3203705	Bottom	S	3	FERRITE BEAD 42R/ 100MHZ 0805	42R/100MHz	~	0805_FERRITE
L102	3203801	Bottom	T	6	CHIP BEAD ARRAY 2X1000R 0405	2x1000R/ 100MHz	~	0405_2_MATSU
L103	3203801	Bottom	T	7	CHIP BEAD ARRAY 2X1000R 0405	2x1000R/ 100MHz	~	0405_2_MATSU
L106	3203725	Bottom	T	5	FERRITE BEAD 0R6 600R/100M 0402	600R/100MHz	~	FERRITE_0402
L107	3203741	Bottom	T	6	FERRITE BEAD 0R5 600R/100MHZ 0603	600R/100MHz	~	0603_BLM
L150	3203801	Top	A	4	CHIP BEAD ARRAY 2X1000R 0405	2x1000R/ 100MHz	~	0405_2_MATSU
L151	3203769	Bottom	E	2	FERR.BEAD 240R/100M 0.4A 0R4 0402	240R/100MHz	~	FERRITE_BK1005
L152	3203769	Bottom	E	2	FERR.BEAD 240R/100M 0.4A 0R4 0402	240R/100MHz	~	FERRITE_BK1005
L153	3203725	Bottom	S	4	FERRITE BEAD 0R6 600R/100M 0402	600R/100MHz	~	FERRITE_0402
L260	3203741	Bottom	I	7	FERRITE BEAD 0R5 600R/100MHZ 0603	600R/100MHz	~	0603_BLM
L261	3203741	Bottom	K	5	FERRITE BEAD 0R5 600R/100MHZ 0603	600R/100MHz	~	0603_BLM
L262	3203741	Bottom	I	6	FERRITE BEAD 0R5 600R/100MHZ 0603	600R/100MHz	~	0603_BLM
L263	3203741	Bottom	I	7	FERRITE BEAD 0R5 600R/100MHZ 0603	600R/100MHz	~	0603_BLM
L264	3203741	Bottom	I	7	FERRITE BEAD 0R5 600R/100MHZ 0603	600R/100MHz	~	0603_BLM
L265	3203741	Bottom	I	7	FERRITE BEAD 0R5 600R/100MHZ 0603	600R/100MHz	~	0603_BLM
L300	3640119	Bottom	N	7	CHOKE 22U M 1R4 0.33A 3.3X3.3X1.5	22uH	~	CHOKE_984FB
L301	3646179	Top	T	5	CHIP COIL 47N J Q23/ 800MHZ 0402	47nH	~	0402L
L302	3646179	Top	T	5	CHIP COIL 47N J Q23/ 800MHZ 0402	47nH	~	0402L

Item	Product code	Location			Description and Value			Type
		Side	Grid	Ref				
L303	3646179	Top	T	5	CHIP COIL 47N J Q23/ 800MHZ 0402	47nH	~	0402L
L304	3646179	Top	T	5	CHIP COIL 47N J Q23/ 800MHZ 0402	47nH	~	0402L
L305	3646179	Top	S	5	CHIP COIL 47N J Q23/ 800MHZ 0402	47nH	~	0402L
L306	3646179	Top	T	5	CHIP COIL 47N J Q23/ 800MHZ 0402	47nH	~	0402L
L307	3646179	Top	S	5	CHIP COIL 47N J Q23/ 800MHZ 0402	47nH	~	0402L
L308	3646179	Top	U	5	CHIP COIL 47N J Q23/ 800MHZ 0402	47nH	~	0402L
L309	3646179	Top	U	5	CHIP COIL 47N J Q23/ 800MHZ 0402	47nH	~	0402L
L320	3203723	Top	L	5	FERRITE BEAD 0R35 68R/100MHZ 0603	68R/100MHz	~	FERRITE_BK1608
L321	3203723	Top	K	6	FERRITE BEAD 0R35 68R/100MHZ 0603	68R/100MHz	~	FERRITE_BK1608
L322	3203723	Top	L	5	FERRITE BEAD 0R35 68R/100MHZ 0603	68R/100MHz	~	FERRITE_BK1608
L323	3203723	Top	L	6	FERRITE BEAD 0R35 68R/100MHZ 0603	68R/100MHz	~	FERRITE_BK1608
L601	3646087	Bottom	G	4	CHIP COIL 1N8+-0N3 Q31/800M 0402	1n8H	~	0402L
L602	3646087	Bottom	G	4	CHIP COIL 1N8+-0N3 Q31/800M 0402	1n8H	~	0402L
L603	3646005	Bottom	G	5	CHIP COIL 2N7+-0N3 Q29/800M 0402	2n7H	~	0402L
L604	3646005	Bottom	G	4	CHIP COIL 2N7+-0N3 Q29/800M 0402	2n7H	~	0402L
L606	3646055	Bottom	G	4	CHIP COIL 8N2 J Q28/ 800MHZ 0402	8n2H	~	0402L
L607	3646055	Bottom	G	3	CHIP COIL 8N2 J Q28/ 800MHZ 0402	8n2H	~	0402L
L608	3646051	Bottom	C	3	CHIP COIL 3N9 +-0N3 Q28/800M 0402	3n9H	~	0402L
L705	3646131	Bottom	G	5	CHIP COIL 3N9 +-0N1 Q28/1GHZ 0402	3n9H	~	0402L_W065_PO L
L706	3646061	Bottom	H	5	CHIP COIL 15N J Q30/ 800M 0402	15nH	~	0402L

Item	Product code	Location			Description and Value			Type
		Side	Grid	Ref				
L707	3646061	Bottom	H	5	CHIP COIL 15N J Q30/ 800M 0402	15nH	~	0402L
L708	3646061	Bottom	H	5	CHIP COIL 15N J Q30/ 800M 0402	15nH	~	0402L
L711	3646069	Bottom	I	5	CHIP COIL 33N J Q23/ 800M 0402	33nH	~	0402L
L712	3646131	Bottom	F	5	CHIP COIL 3N9 +-0N1 Q28/1GHZ 0402	3n9H	~	0402L_H0.45
L713	3646005	Bottom	H	5	CHIP COIL 2N7+-0N3 Q29/800M 0402	2n7H	~	0402L
L714	3646005	Bottom	H	5	CHIP COIL 2N7+-0N3 Q29/800M 0402	2n7H	~	0402L
L730	3646051	Bottom	K	4	CHIP COIL 3N9 +-0N3 Q28/800M 0402	3n9H	~	0402L
L801	4551015	Bottom	D	5	DIR.COUP 897.5/1747.5/ 1880MHZ	897.5/1747.5/ 1880M	~	COUPLER_LDC15 D
L804	3203705	Bottom	H	8	FERRITE BEAD 42R/ 100MHZ 0805	42R/100MHz	~	0805_FERRITE
L805	3203705	Bottom	I	8	FERRITE BEAD 42R/ 100MHZ 0805	42R/100MHz	~	0805_FERRITE
L806	3646009	Bottom	D	8	CHIP COIL 10N J Q30/ 800M 0402	10nH	~	0402L
L807	3646059	Bottom	E	8	CHIP COIL 5N6 +-0N3 Q28/800M 0402	5n6H	~	0402L
L808	3646065	Bottom	C	5	CHIP COIL 12N J Q31/ 800M 0402	12nH	~	0402L
L809	3646043	Bottom	C	5	CHIP COIL 1N5 +-0N3 Q33/800M 0402	1n5H	~	0402L
N100	4341063	Top	T	4	REG 2.8V/150MA LP3985 SOT23-5	~	2.8V	SOT23_5_H1.2
N150	4341429	Bottom	O	6	AF AMP 0.4W/2.6V LM4890ITLX USMD9	~	~	USMD9_1.544X1 .544_0.675
N300	4341309	Bottom	N	8	DC/DC CONV 350MA TK11851 SSOP8	~	~	SOT23L_8
N301	4341087	Top	S	3	HALL IC SWITCH TLE4917 TSSOP6	~	~	TSOP_6_H1.1
N306	4341649	Bottom	O	5	TOUCH SCREEN CONT TSC2046 BGA48	~	~	PBGA_N48
N601	4370867	Bottom	H	4	MJOLNER_RF ASIC PMB3346 LFBGA80	~	~	LFBGA_80

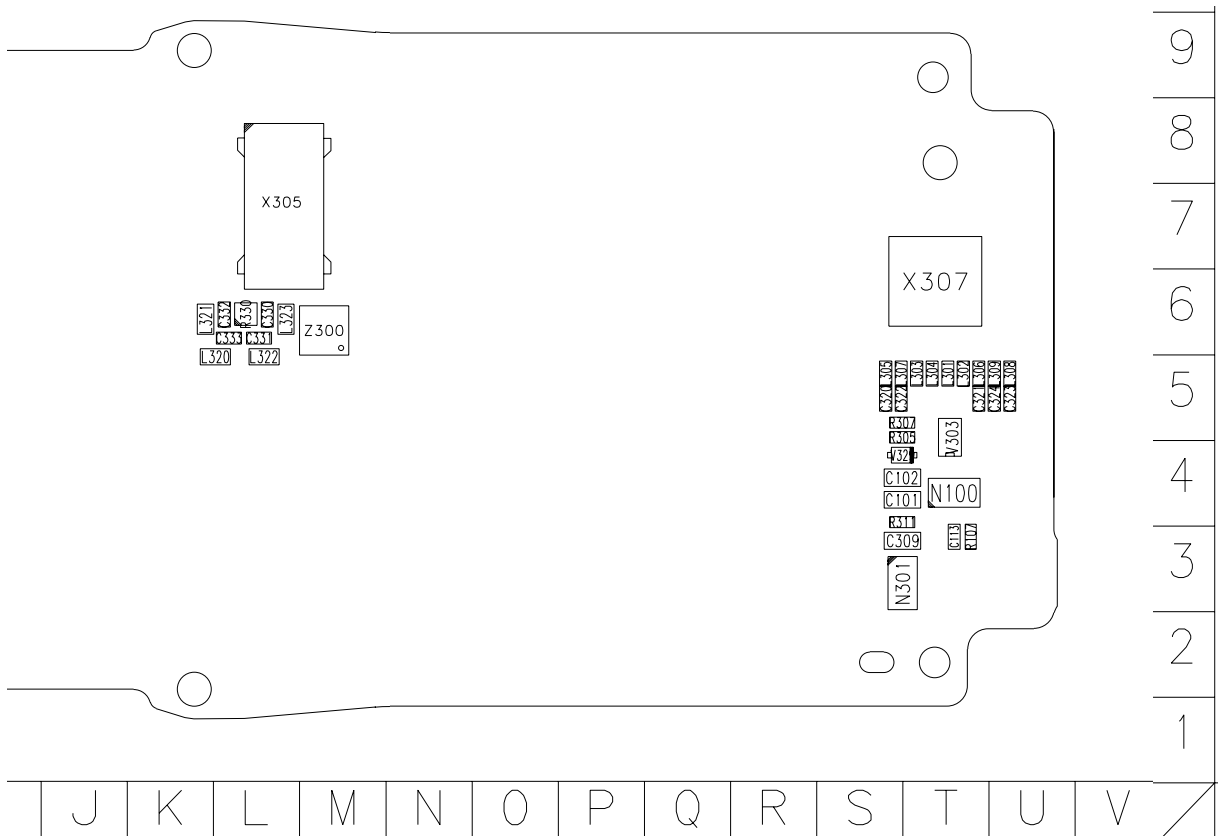
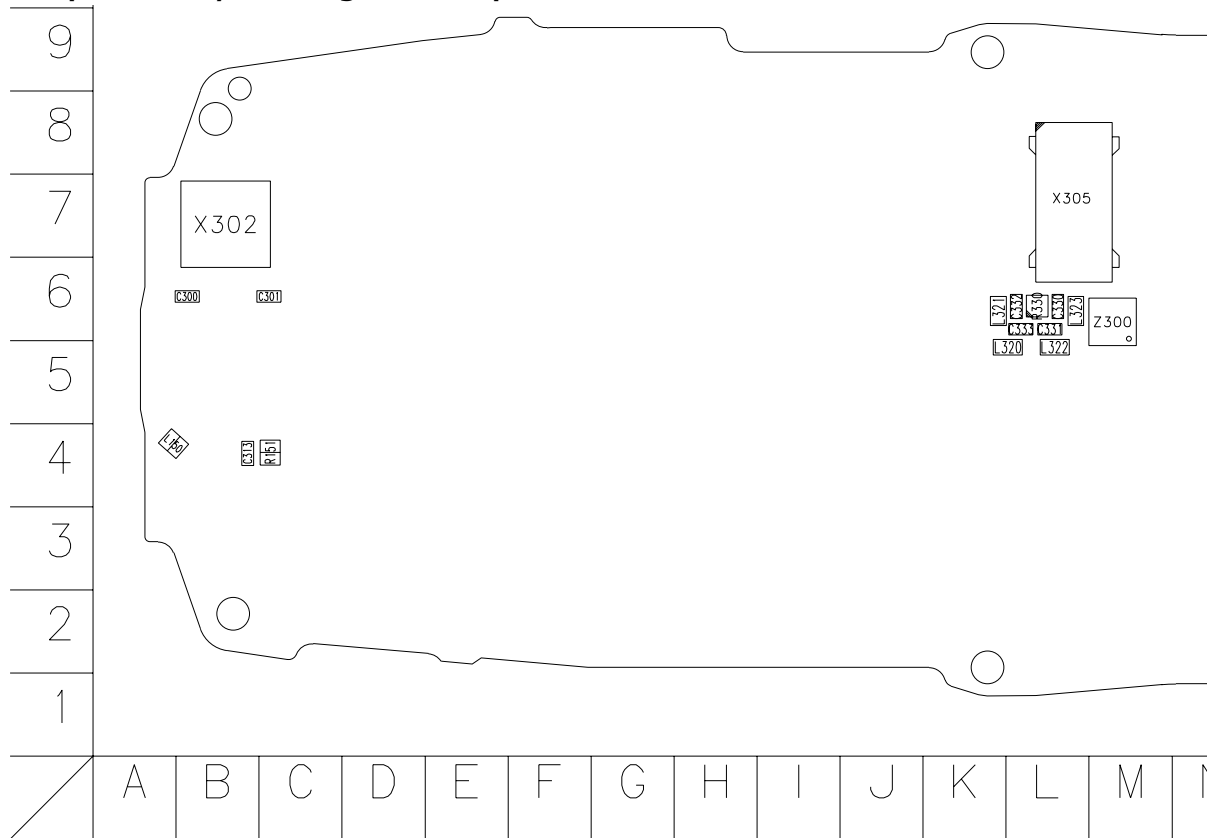
Item	Product code	Location			Description and Value			Type
		Side	Grid	Ref				
N801	4350409	Bottom	D	6	PW AMP PF08125B-03 GSM900/1800/1900	~	~	PW_AMP_PA_H DG13
R100	1620027	Bottom	R	6	RES NETWORK 0W06 2X47R J 0404	2x47R	~	0404_R_SR
R101	1620027	Bottom	R	6	RES NETWORK 0W06 2X47R J 0404	2x47R	~	0404_R_SR
R102	1620027	Bottom	R	7	RES NETWORK 0W06 2X47R J 0404	2x47R	~	0404_R_SR
R103	4120011	Bottom	T	6	ZDIX4 IP4043CX5 CA 14V2 10W CSP5	~	~	uBGA5
R104	1430812	Bottom	R	7	Resistor 5% 63mW	220k	~	0402R
R105	4120011	Bottom	T	7	ZDIX4 IP4043CX5 CA 14V2 10W CSP5	~	~	uBGA5
R106	1820039	Bottom	O	8	NTC RES 47K J B=4050+-3% 0402	47k	~	0402_NTH5
R107	1430804	Top	T	3	Resistor 5% 63mW	100k	~	0402R
R109	1430804	Bottom	R	7	Resistor 5% 63mW	100k	~	0402R
R151	1825031	Top	C	4	VARISTOR ARRAY 2XVWM16V VC50 0405	2XVWM16V	~	0405_2
R153	1620105	Bottom	N	6	RES NETWORK 0W06 2X2k2 J 0404	2x2k2	~	MNR02
R155	1825133	Bottom	S	4	CHIP VARISTOR VWM14V VC50V 0402	14V/50V	~	0402_VAR
R156	1430760	Bottom	O	6	Resistor 5% 63mW	1k8	~	0402R
R158	1430752	Bottom	O	8	Resistor 5% 63mW	820R	~	0402R
R159	1430754	Bottom	N	6	Resistor 5% 63mW	1k0	~	0402R
R160	1430734	Bottom	O	6	Resistor 5% 63mW	220R	~	0402R
R162	1620105	Bottom	N	7	RES NETWORK 0W06 2X2k2 J 0404	2x2k2	~	MNR02
R163	1430786	Bottom	N	6	Resistor 5% 63mW	18k	~	0402R
R164	1430762	Bottom	N	6	Resistor 5% 63mW	2k2	~	0402R
R165	1430762	Bottom	N	6	Resistor 5% 63mW	2k2	~	0402R
R166	1430786	Bottom	O	6	Resistor 5% 63mW	18k	~	0402R
R167	1430917	Bottom	N	5	CHIPRES 0W06 3K3 F 0402	3k3	~	0402R
R168	1430804	Bottom	O	6	Resistor 5% 63mW	100k	~	0402R
R171	1430754	Bottom	O	7	Resistor 5% 63mW	1k0	~	0402R

Item	Product code	Location			Description and Value			Type
		Side	Grid	Ref				
R173	1430734	Bottom	O	8	Resistor 5% 63mW	220R	~	0402R
R200	1414605	Bottom	K	5	CHIPRES 0W25 0R22 J 0805	0R22	~	0805R_THERM1
R202	1620043	Bottom	L	8	RES NETWORK 0W03 4X100K J 0804	4x100k	~	EXB28V
R206	1430770	Bottom	L	9	Resistor 5% 63mW	4k7	~	0402R
R207	1430770	Bottom	M	5	Resistor 5% 63mW	4k7	~	0402R
R300	1430712	Bottom	N	8	Resistor 5% 63mW	27R	~	0402R
R305	1430744	Top	S	4	Resistor 5% 63mW	470R	~	0402R
R306	1430790	Bottom	B	5	Resistor 5% 63mW	27k	~	0402R
R307	1430700	Top	S	5	Resistor 5% 63mW	10R	~	0402R
R311	1430726	Top	S	4	Resistor 5% 63mW	100R	~	0402R
R330	4120011	Top	L	6	ZDIX4 IP4043CX5 CA 14V2 10W CSP5	~	~	uBGA5
R331	1430734	Bottom	J	8	Resistor 5% 63mW	220R	~	0402R
R332	1430734	Bottom	K	8	Resistor 5% 63mW	220R	~	0402R
R333	1430734	Bottom	H	8	Resistor 5% 63mW	220R	~	0402R
R388	4120071	Bottom	O	8	ASIP EMIF03-SIM01 SIM FILTER BGA8	~	~	uBGA8
R420	1430754	Bottom	L	5	Resistor 5% 63mW	1k0	~	0402R
R422	1430790	Bottom	J	8	Resistor 5% 63mW	27k	~	0402R
R426	1430754	Bottom	K	5	Resistor 5% 63mW	1k0	~	0402R
R450	1430770	Bottom	P	5	Resistor 5% 63mW	4k7	~	0402R
R610	1430710	Bottom	H	2	Resistor 5% 63mW	22R	~	0402R
R612	1430754	Bottom	H	3	Resistor 5% 63mW	1k0	~	0402R
R617	1430718	Bottom	I	3	Resistor 5% 63mW	47R	~	0402R
R623	1430726	Bottom	I	4	Resistor 5% 63mW	100R	~	0402R
R625	1430718	Bottom	I	4	Resistor 5% 63mW	47R	~	0402R
R626	1430846	Bottom	H	3	Resistor 1% 63mW	2k7	~	0402R
R628	1430693	Bottom	I	5	Chipres 0W06 5R6 J 0402	5R6	~	0402R
R629	1430693	Bottom	I	4	Chipres 0W06 5R6 J 0402	5R6	~	0402R
R630	1430718	Bottom	I	3	Resistor 5% 63mW	47R	~	0402R

Item	Product code	Location			Description and Value			Type
		Side	Grid	Ref				
R706	1430792	Bottom	I	5	Resistor 5% 63mW	33k	~	0402R
R707	1430778	Bottom	I	5	Resistor 5% 63mW	10k	~	0402R
R708	1430770	Bottom	I	5	Resistor 5% 63mW	4k7	~	0402R
R710	1430865	Bottom	J	4	CHIPRES 0W06 5K6 F 0402	5k6	~	0402R
R711	1430776	Bottom	L	2	Resistor 5% 63mW	8k2	~	0402R
R713	1620065	Bottom	J	4	RES NETWORK 0W06 4X5K6 J 0804	4x5.6k	~	MNR04
R717	1620105	Bottom	J	5	RES NETWORK 0W06 2X2K2 J 0404	2x2k2	~	MNR02_SR
R720	1430730	Bottom	G	5	Resistor 5% 63mW	150R	~	0402R
R721	1430730	Bottom	G	5	Resistor 5% 63mW	150R	~	0402R
R725	1430724	Bottom	H	5	Resistor 5% 63mW	82R	~	0402R
R726	1430724	Bottom	H	5	Resistor 5% 63mW	82R	~	0402R
R729	1620507	Bottom	E	8	RES NETWORK 0W04 3DB ATT 0404	292R/17R6/292R	~	0404_RAC10
R731	1620507	Bottom	K	4	RES NETWORK 0W04 3DB ATT 0404	292R/17R6/292R	~	0404_RAC10
R801	1430770	Bottom	D	4	Resistor 5% 63mW	4k7	~	0402R
R802	1430726	Bottom	C	4	Resistor 5% 63mW	100R	~	0402R
R803	1430718	Bottom	E	5	Resistor 5% 63mW	47R	~	0402R
R805	1620517	Bottom	C	8	RES NETWORK 0W04 6DB ATT 0404	150R/37R4/150R	~	0404_RAC10
R817	1430754	Bottom	C	8	Resistor 5% 63mW	1k0	~	0402R
R818	1430726	Bottom	D	8	Resistor 5% 63mW	100R	~	0402R
R819	1620507	Bottom	E	8	RES NETWORK 0W04 3DB ATT 0404	292R/17R6/292R	~	0404_RAC10
R820	1430754	Bottom	D	8	Resistor 5% 63mW	1k0	~	0402R
R821	1430726	Bottom	E	8	Resistor 5% 63mW	100R	~	0402R
R822	1430766	Bottom	D	9	Resistor 5% 63mW	3k9	~	0402R
R823	1430732	Bottom	E	9	Resistor 5% 63mW	180R	~	0402R
S302	5200025	Bottom	B	5	SM TACT SW SIDE TRAVEL 0.2MM	~	~	SWITCH_SKRE
T701	4550191	Bottom	F	5	TRANSF BALUN 1800+-100MHZ 2X1.25	~	~	TRANS_LDB213

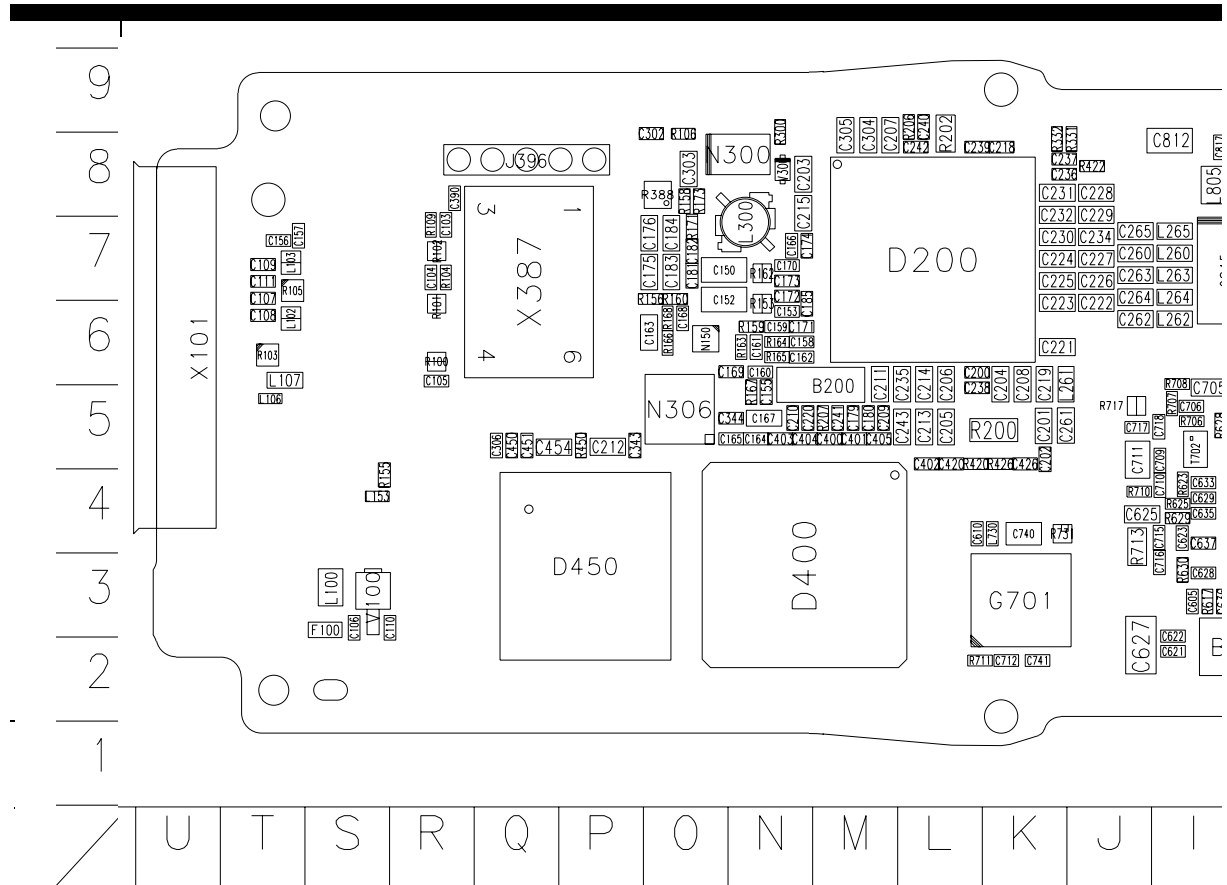
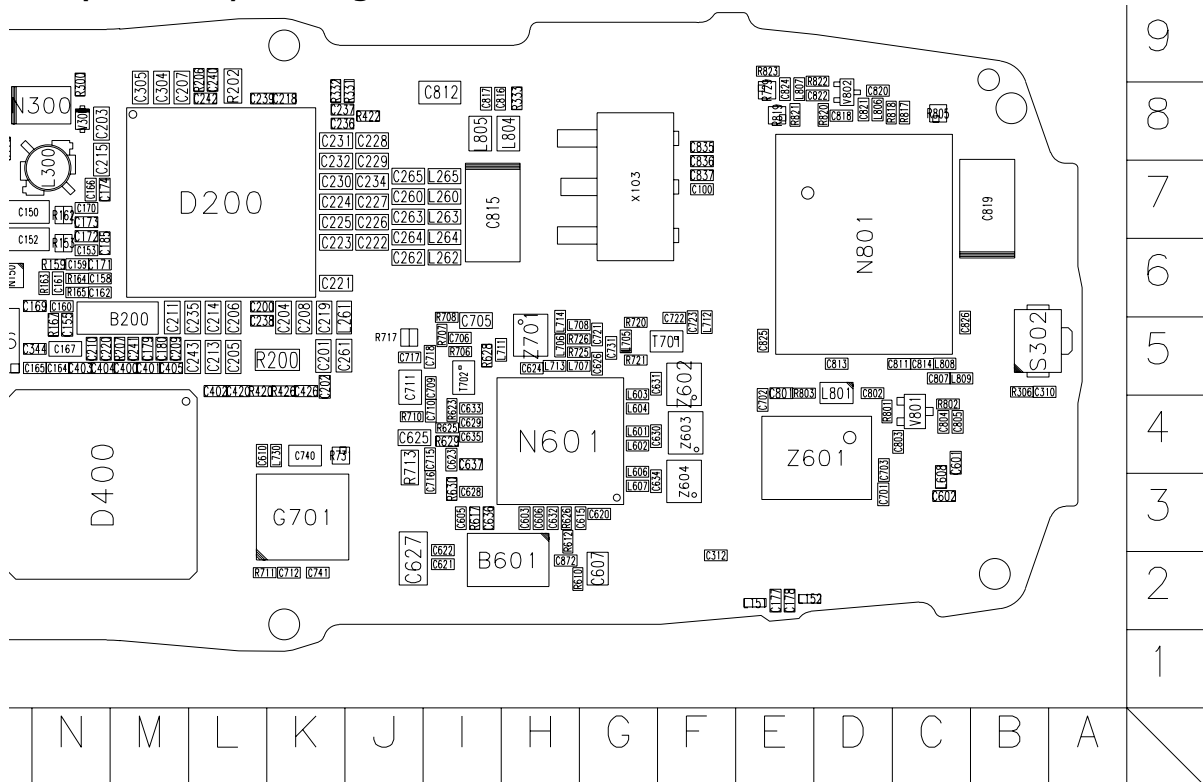
Item	Product code	Location			Description and Value			Type
		Side	Grid	Ref				
T702	4550179	Bottom	I	5	BALUN TRANS 3.7GHZ+/-300MHZ 0805	~	~	TRANS_LDB15
V100	4113721	Bottom	S	3	TVS DI 1PMT16AT3 16V 175W PWRMITE	~	~	CASE_457
V300	4110479	Bottom	N	8	SCH DI 1PS79SB31 200MA 30V SOD523	~	~	SC79
V303	4219937	Top	T	4	TRX2 UMT1/PUMT1 P40V100MA SOT363	~	~	SOT_363
V329	4110479	Top	S	4	SCH DI 1PS79SB31 200MA 30V SOD523	~	~	SC79
V801	4115821	Bottom	C	4	SCHDIX2 HSMS282C 15V <1PF SOT323	~	~	SOT323_H1.1
V802	4210171	Bottom	D	8	TR NE68119 ***RESERVED HDB12***	~	~	SC75
X101	5460061	Bottom	U	6	SM SYSTEM CONNEC-TOR 14POL	~	~	SYSCON_MQ202_NK_14R3
X103	5409253	Bottom	G	7	SM BATTERY CONN 3POL SPR 12V 2A	~	~	LYNX_BATT_CON N
X302	5469175	Top	B	7	SM CONN BTB 2X5 F P0.5	~	~	CON_DF23C_10 DS
X305	5469219	Top	L	7	SM CONN 2X12F P0.4 30V 0.3A PCB/PCB	~	~	JST_R_JAVK_G_1_R3
X307	5469175	Top	T	6	SM CONN BTB 2X5 F P0.5	~	~	CON_DF23C_10 DS
X387	5409219	Bottom	Q	7	SM WIM CONNECTOR 6POL P2.54	~	~	SIM_91485_000 1
Z300	4120031	Top	M	6	EMI/ESD FILT EMIF10-1K010F1 BGA24	~	~	uBGA24
Z601	4510385	Bottom	D	4	DIPL+3XSW 880-960/1710-1990MHZ 7X5	880-960/1710-1990MHz	~	ANT_SW_KH
Z602	4511313	Bottom	F	5	SAW FILT 1842.5+-37.5MHZ 2.5X2.0	1842.5MHz	~	FILTER_SAW_SAF SD
Z603	4511325	Bottom	F	4	SAW FILT 1960+-30MHZ/4DB 2.5X2.0	1960MHz	~	FILTER_SAW_SX_B195E
Z604	4511279	Bottom	F	3	SAW FILT 942.5+-17.5MHZ/3.5 2.5X2	942.5MHz	~	FILTER_SAW_SAF SD
Z701	4511311	Bottom	H	5	SAW FILT 897.5+-17.5MHZ/3.5 2.5X2	897.5MHz	~	FILTER_SAW_SAF SD

**Component layout diagram - Top**





Component layout diagram - Bottom



[This page intentionally blank]